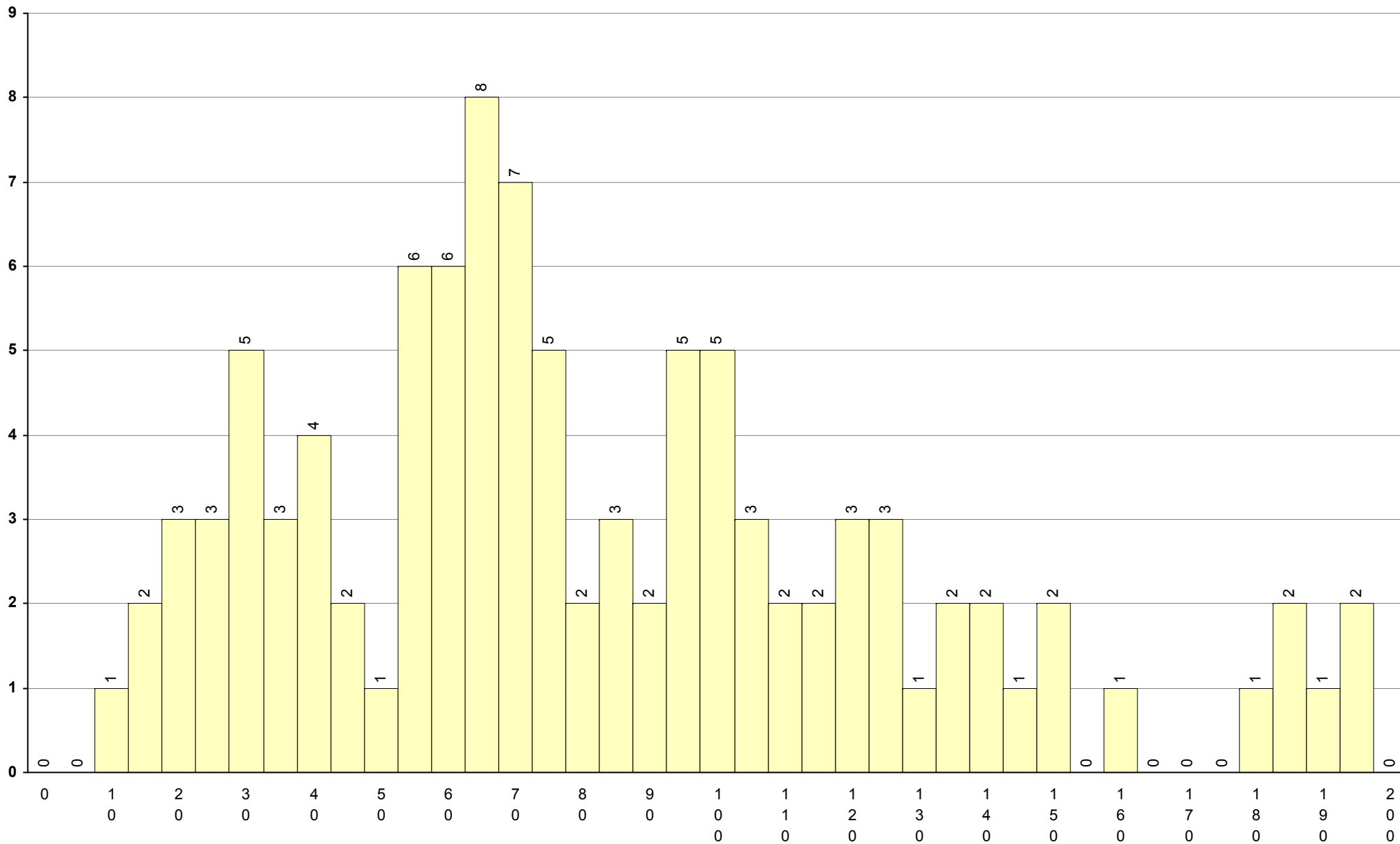
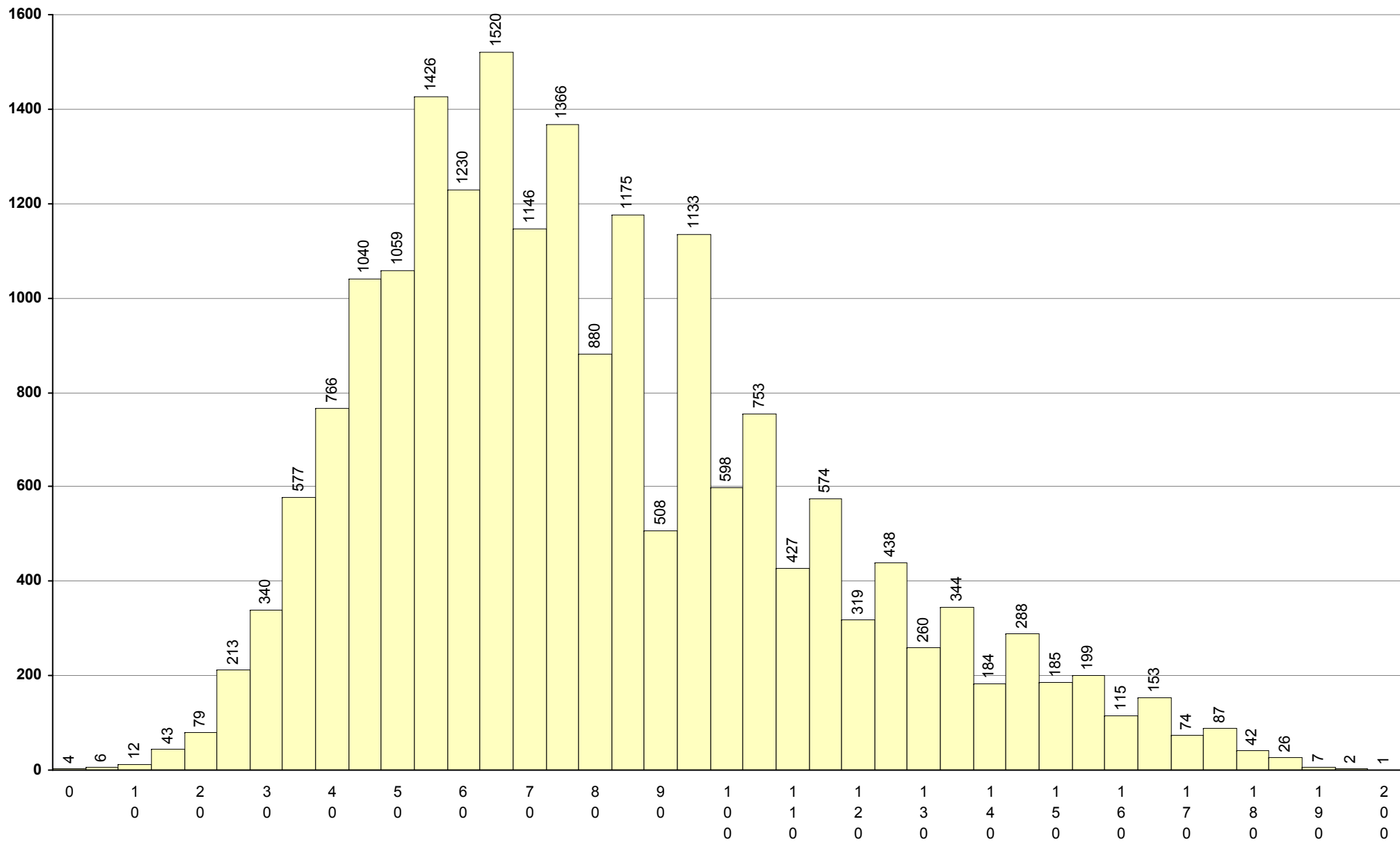


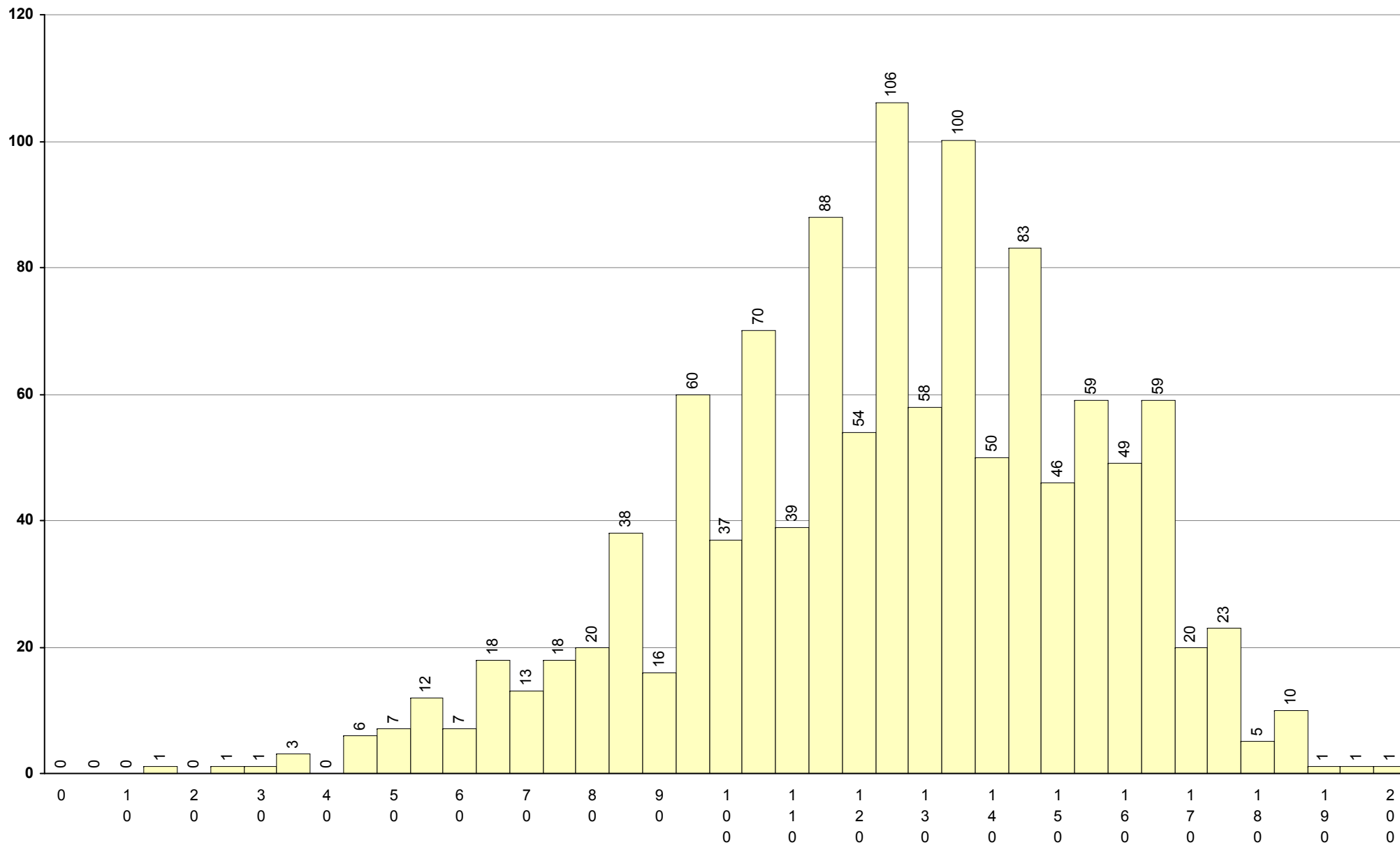
501 Alemão 2ª Fase Provas: 101 Negativas: 63 Média: 84 Desvio: 44



702 Biologia e Geologia **2ª Fase** Provas: 19599 Negativas: 13390 Média: **81** Desvio: 33



706 Desenho A **2ª Fase** Provas: 1180 Negativas: 161 Média: **126** Desvio: 30



712 Economia A

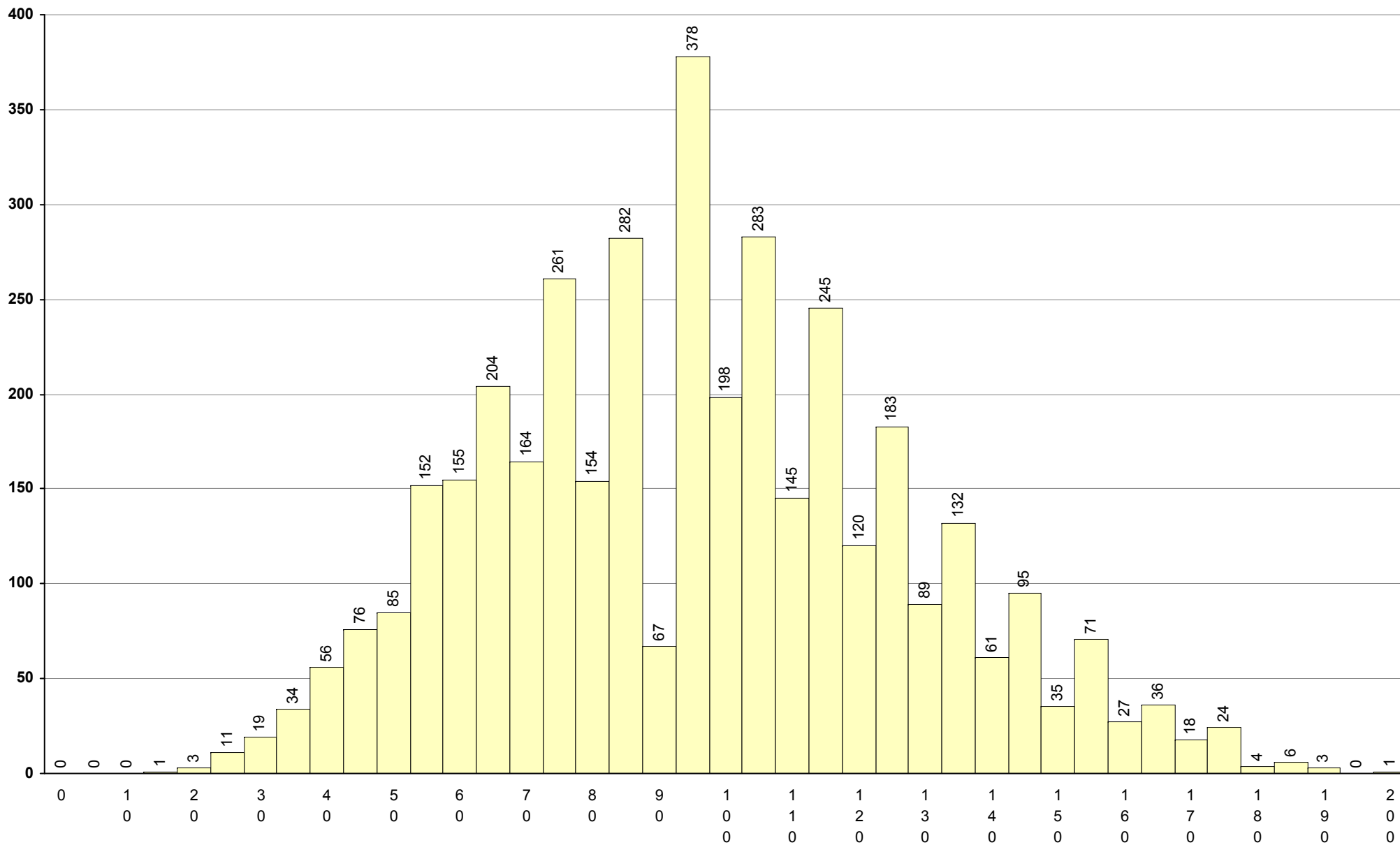
2ª Fase

Provas: 3878

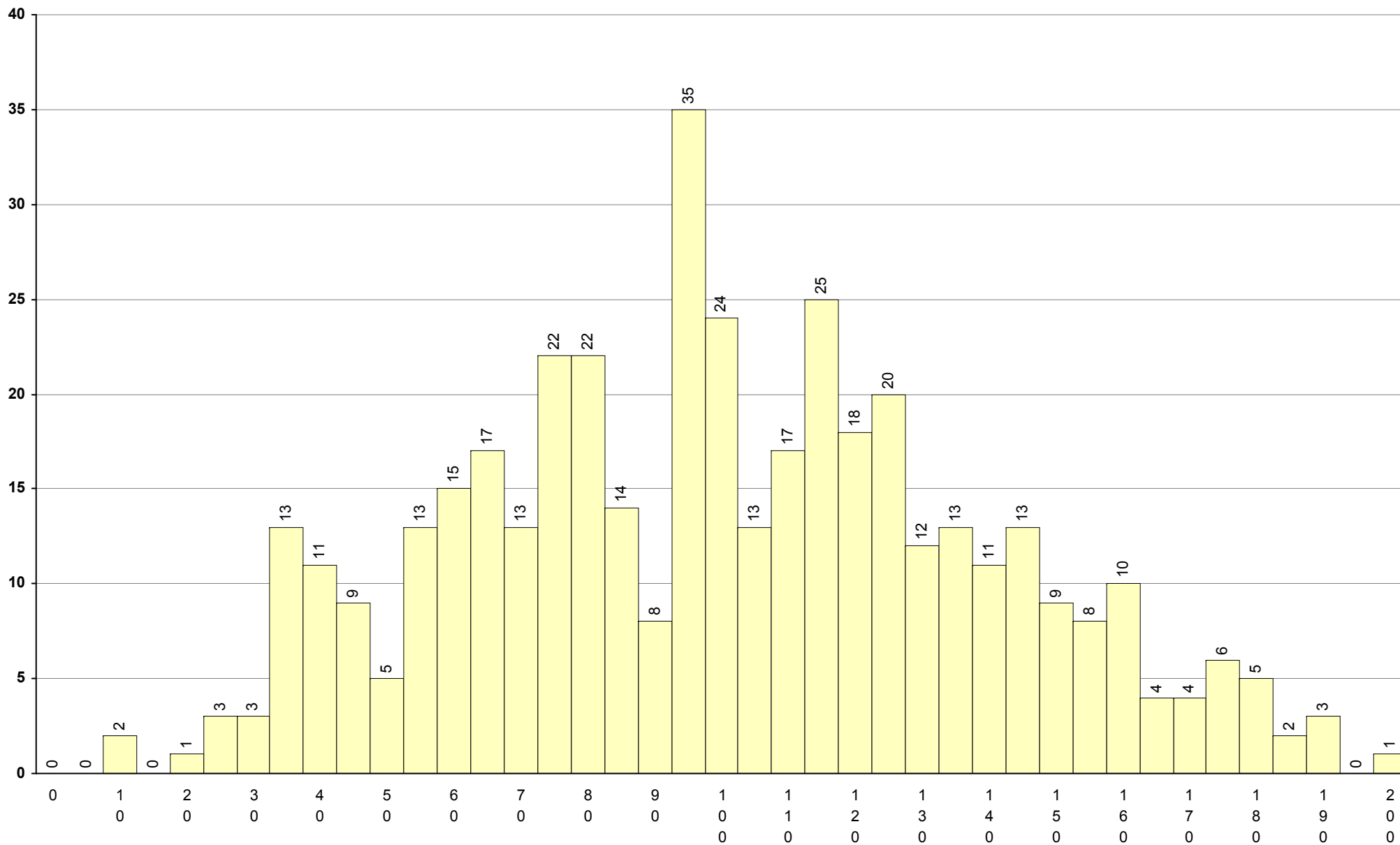
Negativas: 1724

Média: 97

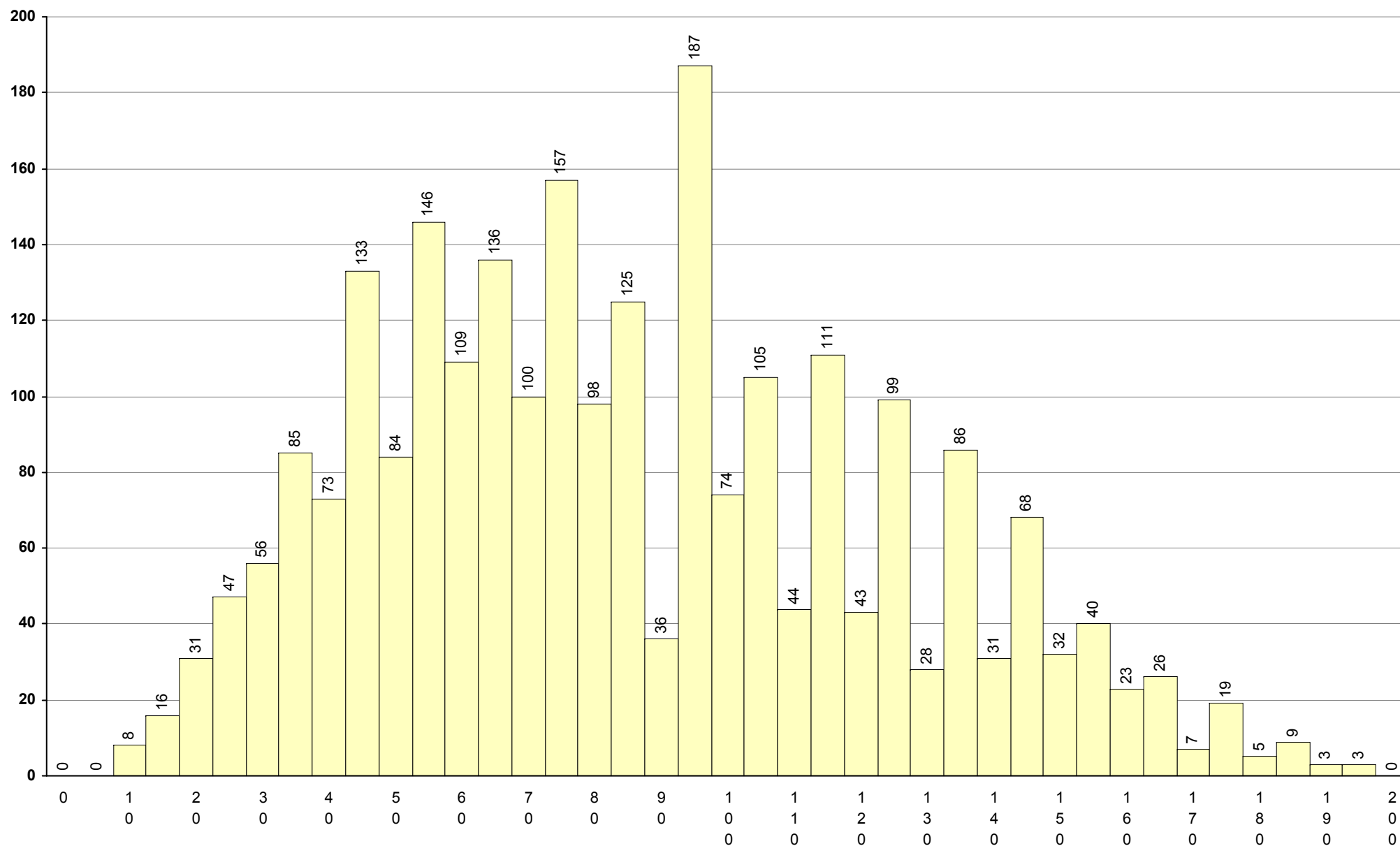
Desvio: 31



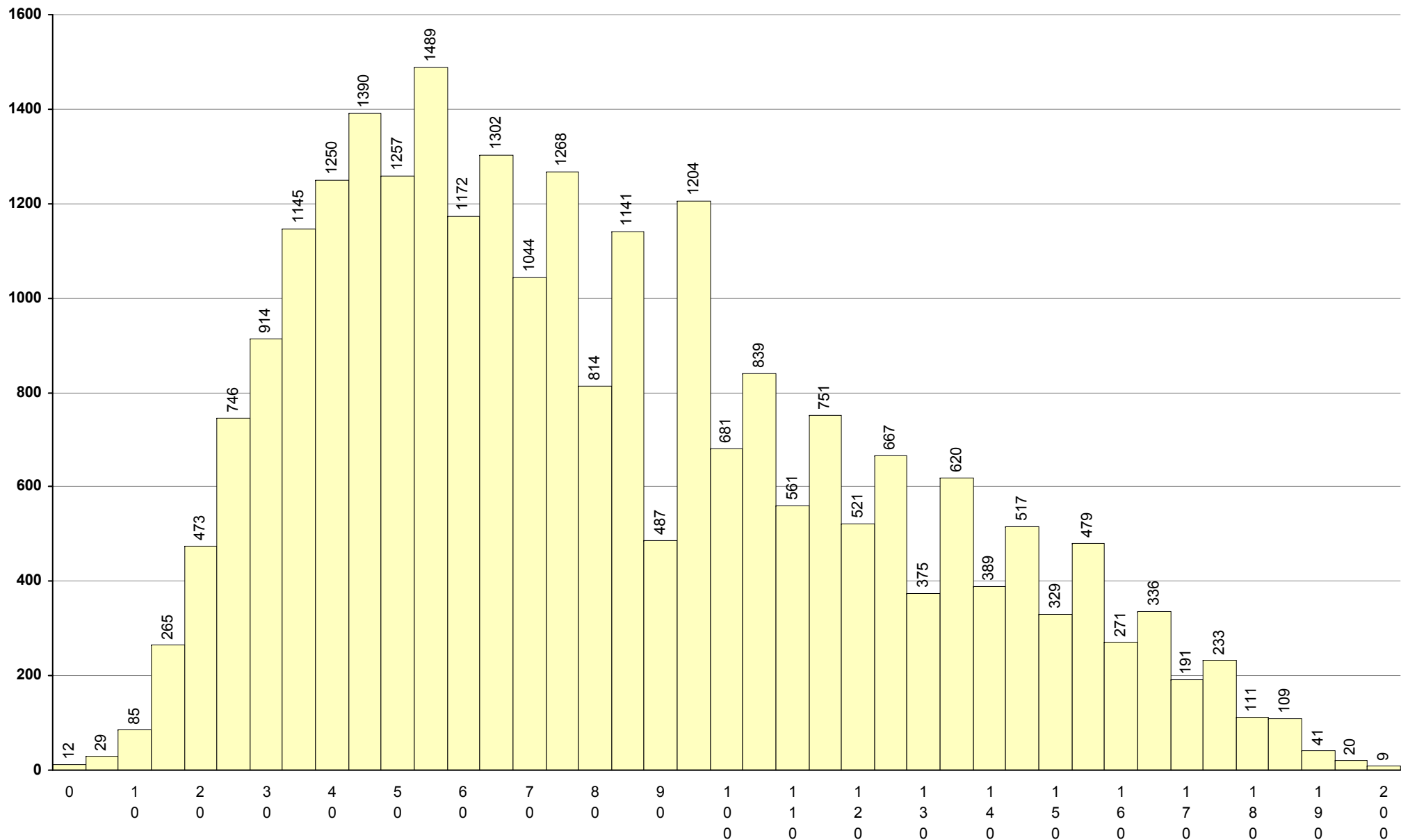
547 Espanhol	2ª Fase	Provas: 424	Negativas: 171	Média: 102	Desvio: 38
---------------------	----------------	-------------	----------------	-------------------	------------



714 Filosofia 2ª Fase Provas: 2483 Negativas: 1440 Média: **87** Desvio: 38



715 Física e Química A 2ª Fase Provas: 25537 Negativas: 16283 Média: 82 Desvio: 41



517 Francês

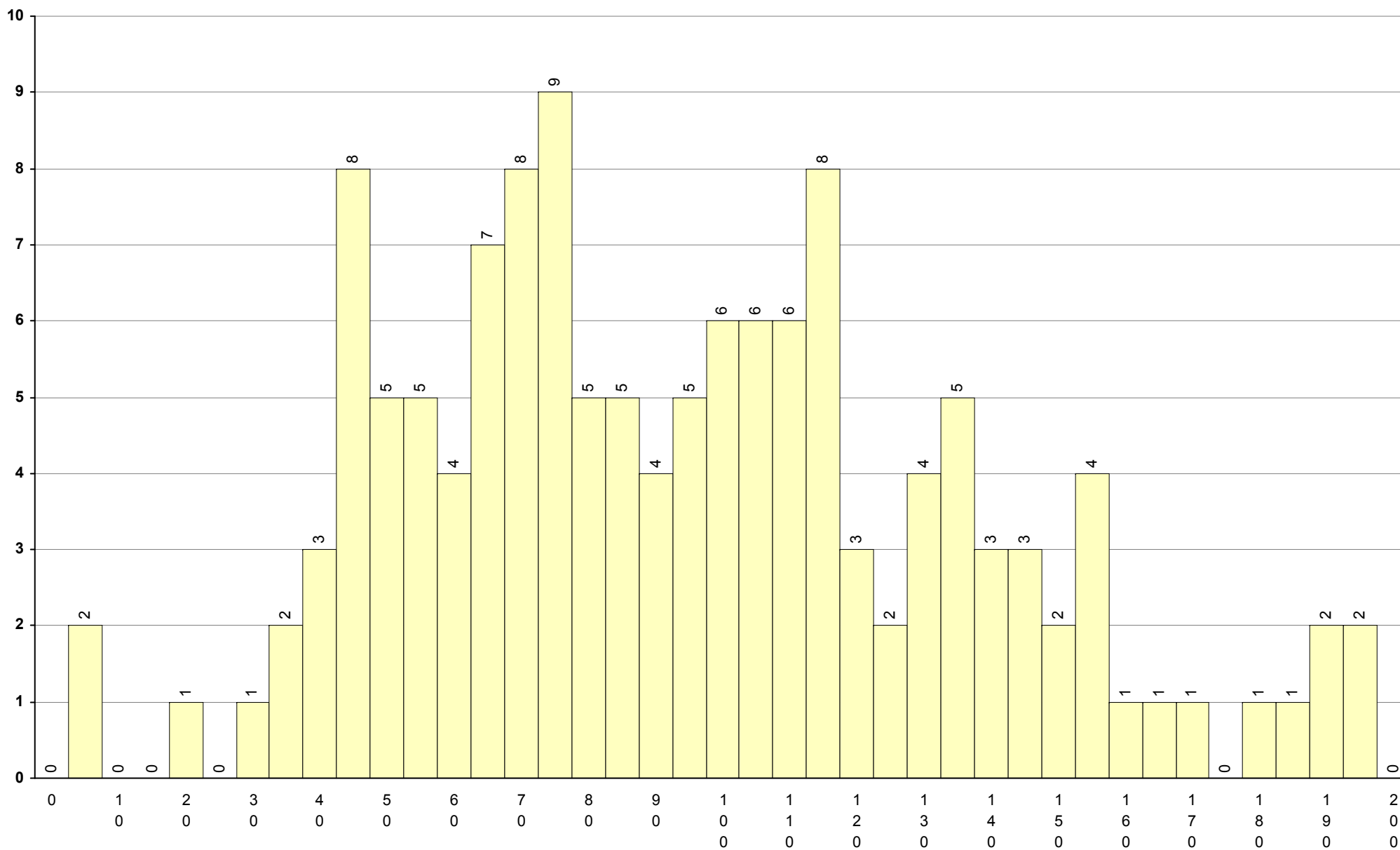
2ª Fase

Provas: 135

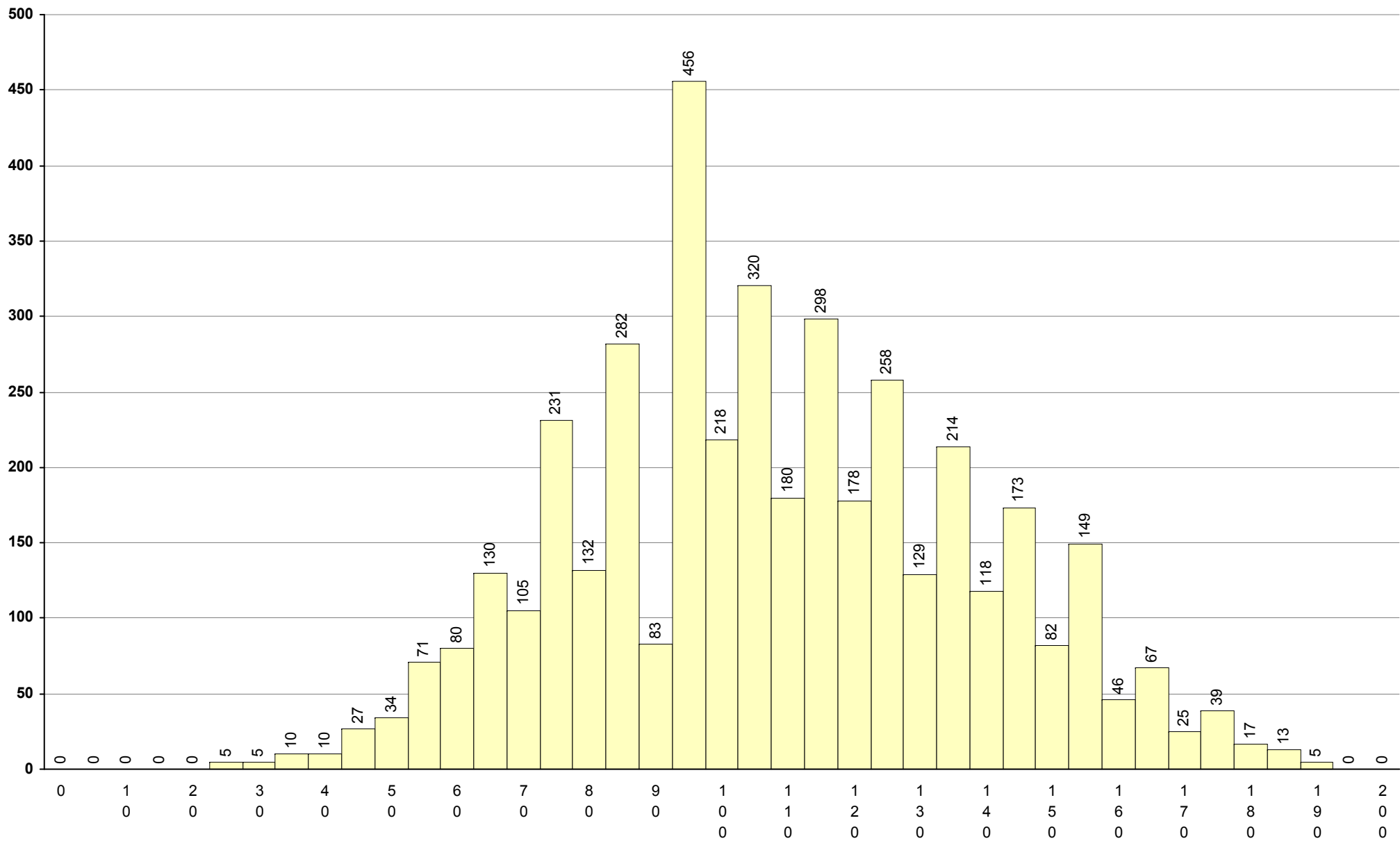
Negativas: 69

Média: 96

Desvio: 41



719 Geografia A **2ª Fase** Provas: 4190 Negativas: 1205 Média: **110** Desvio: 30



708 Geometria Descritiva A

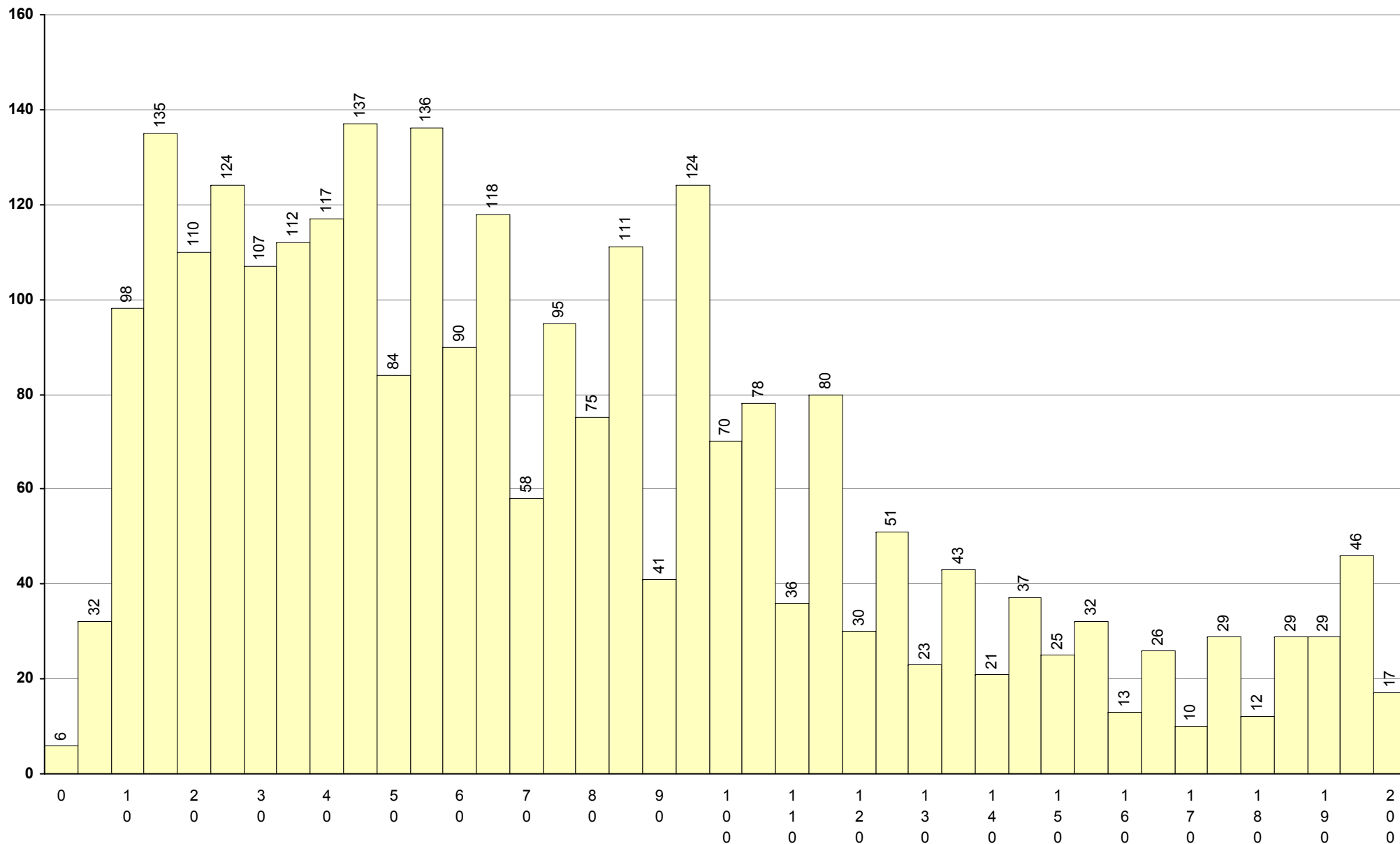
2ª Fase

Provas: 2647

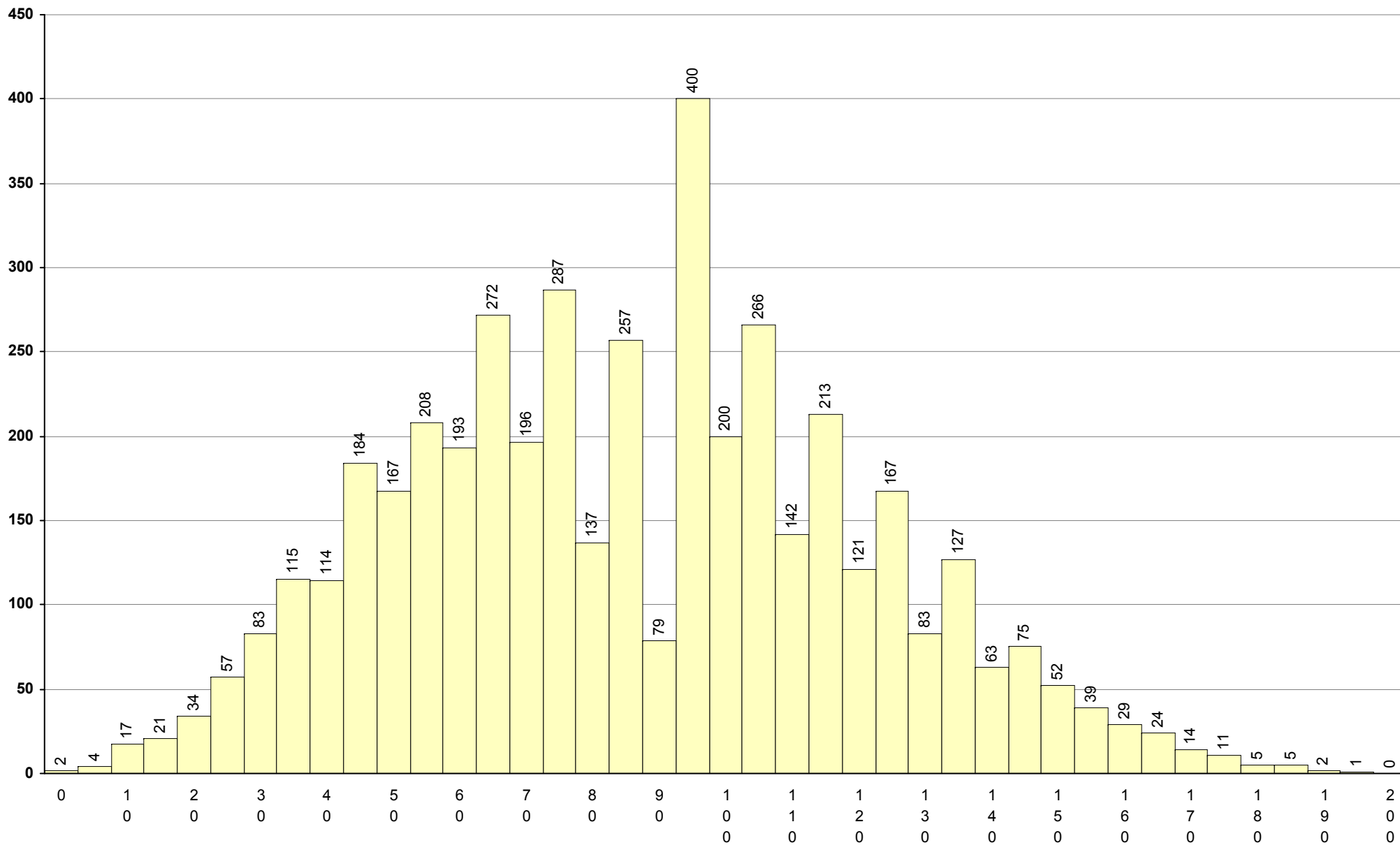
Negativas: 1786

Média: 76

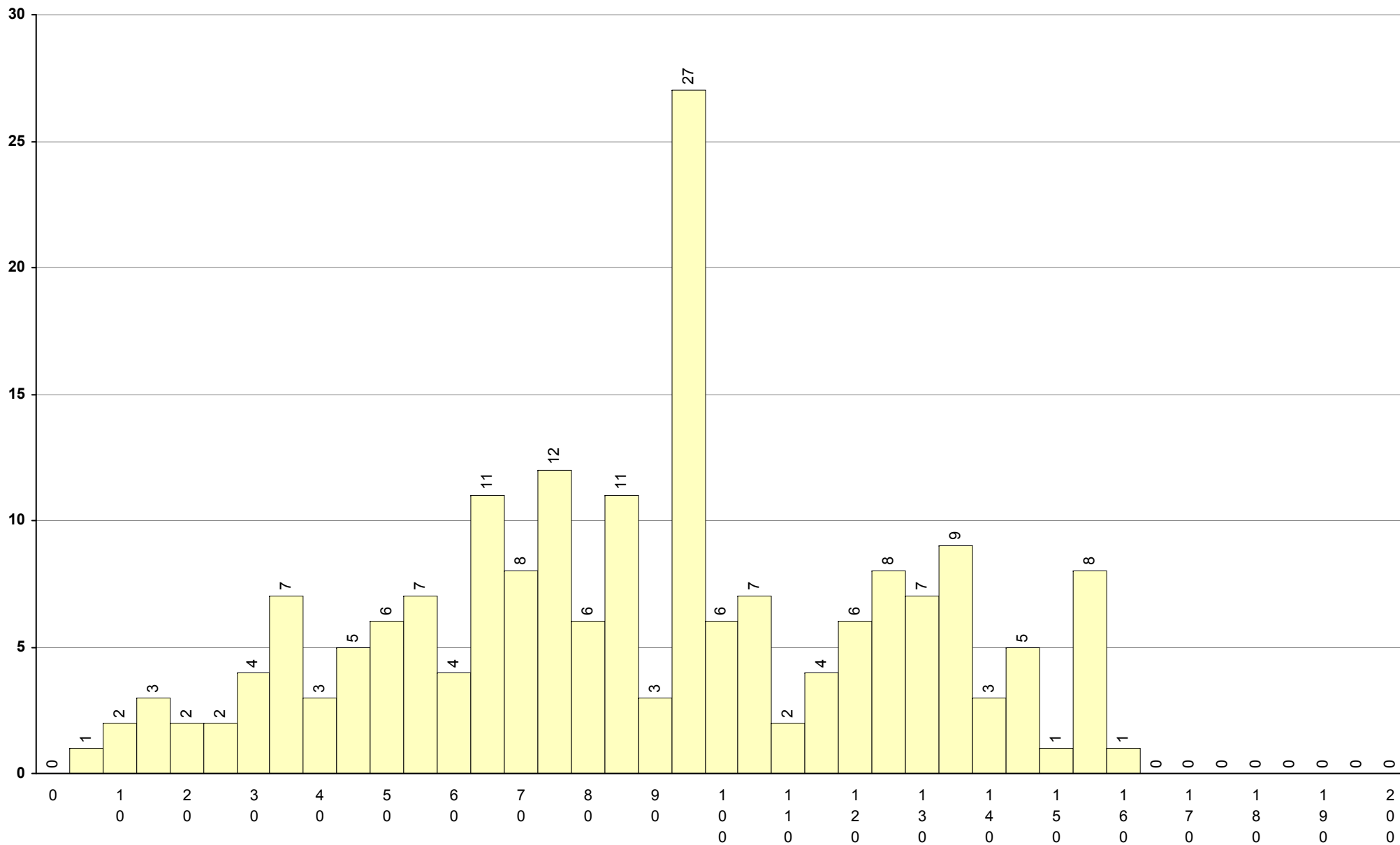
Desvio: 49



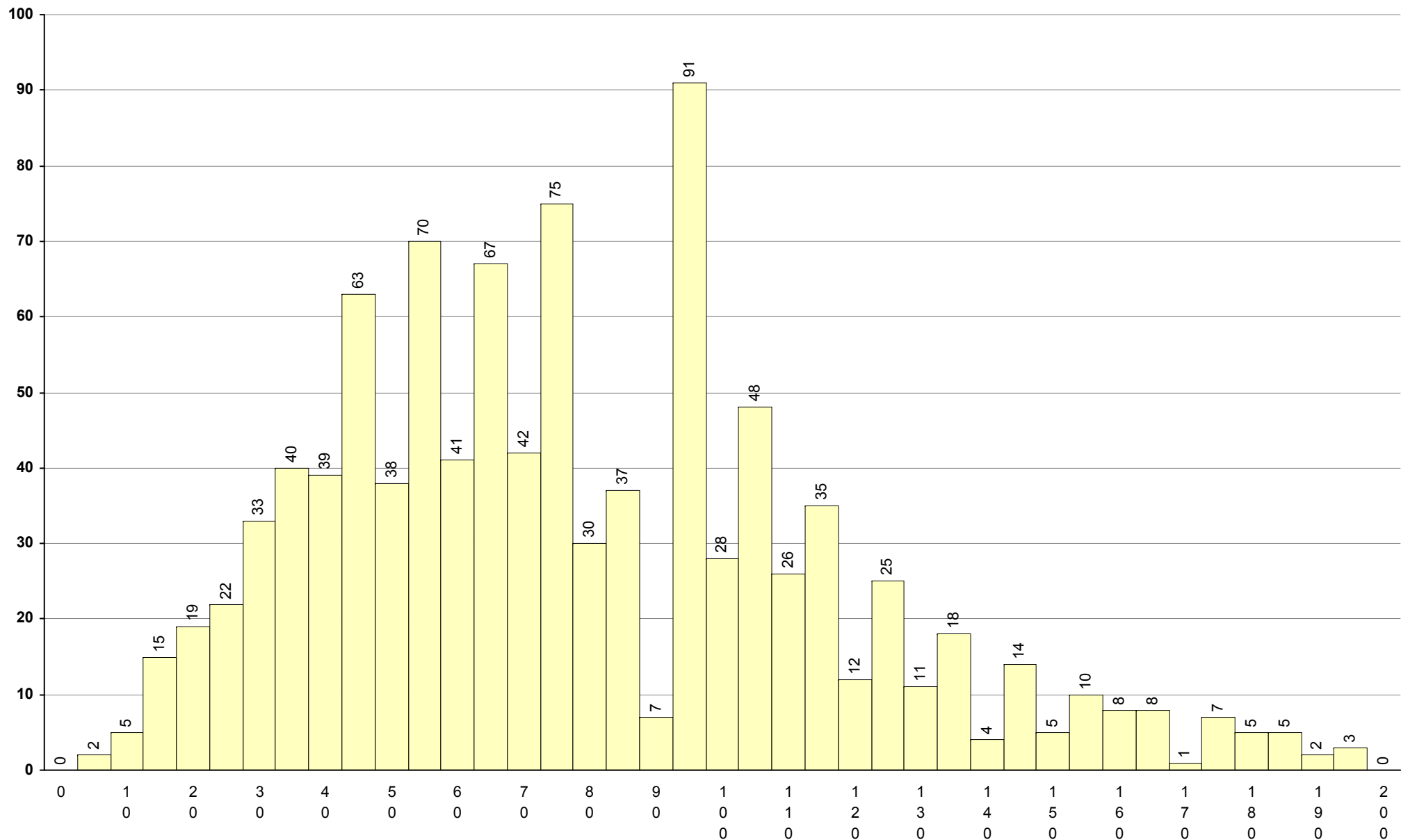
623 História A **2ª Fase** Provas: 4466 Negativas: 2427 Média: **88** Desvio: 34



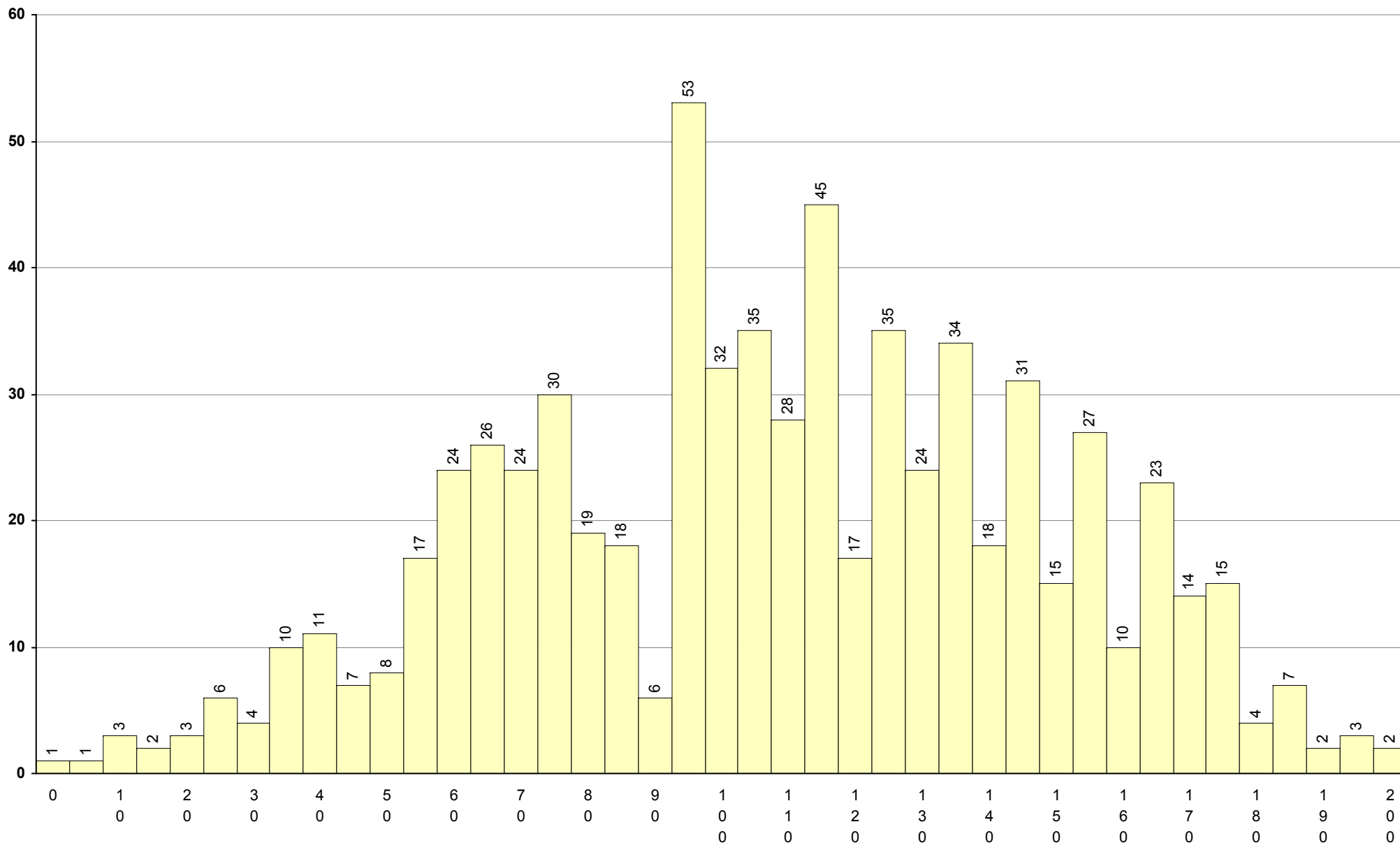
723 História B **2ª Fase** Provas: 191 Negativas: 97 Média: **90** Desvio: 37



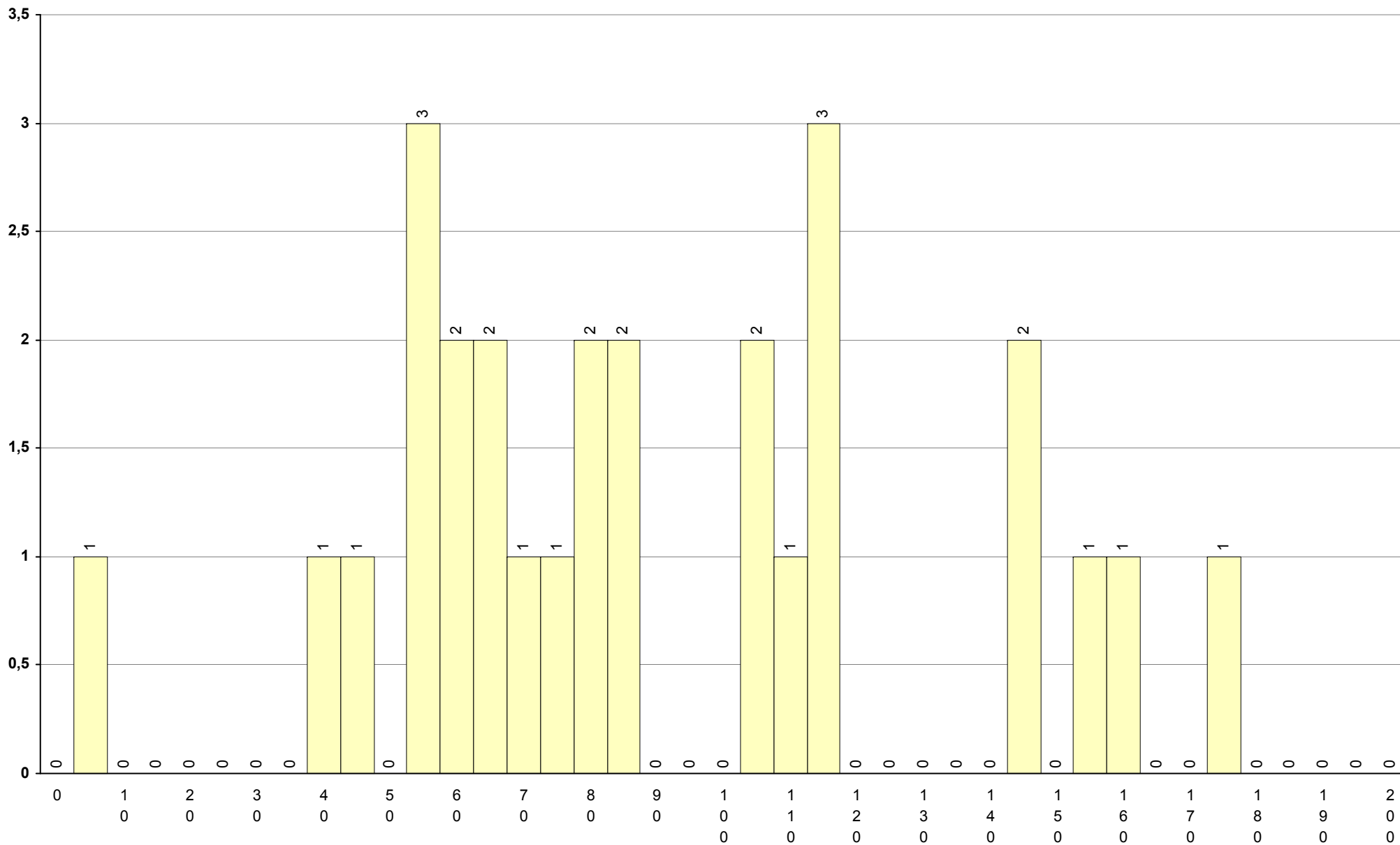
724 História da Cultura e das Artes **2ª Fase** Provas: 1011 Negativas: 645 Média: **80** Desvio: 38



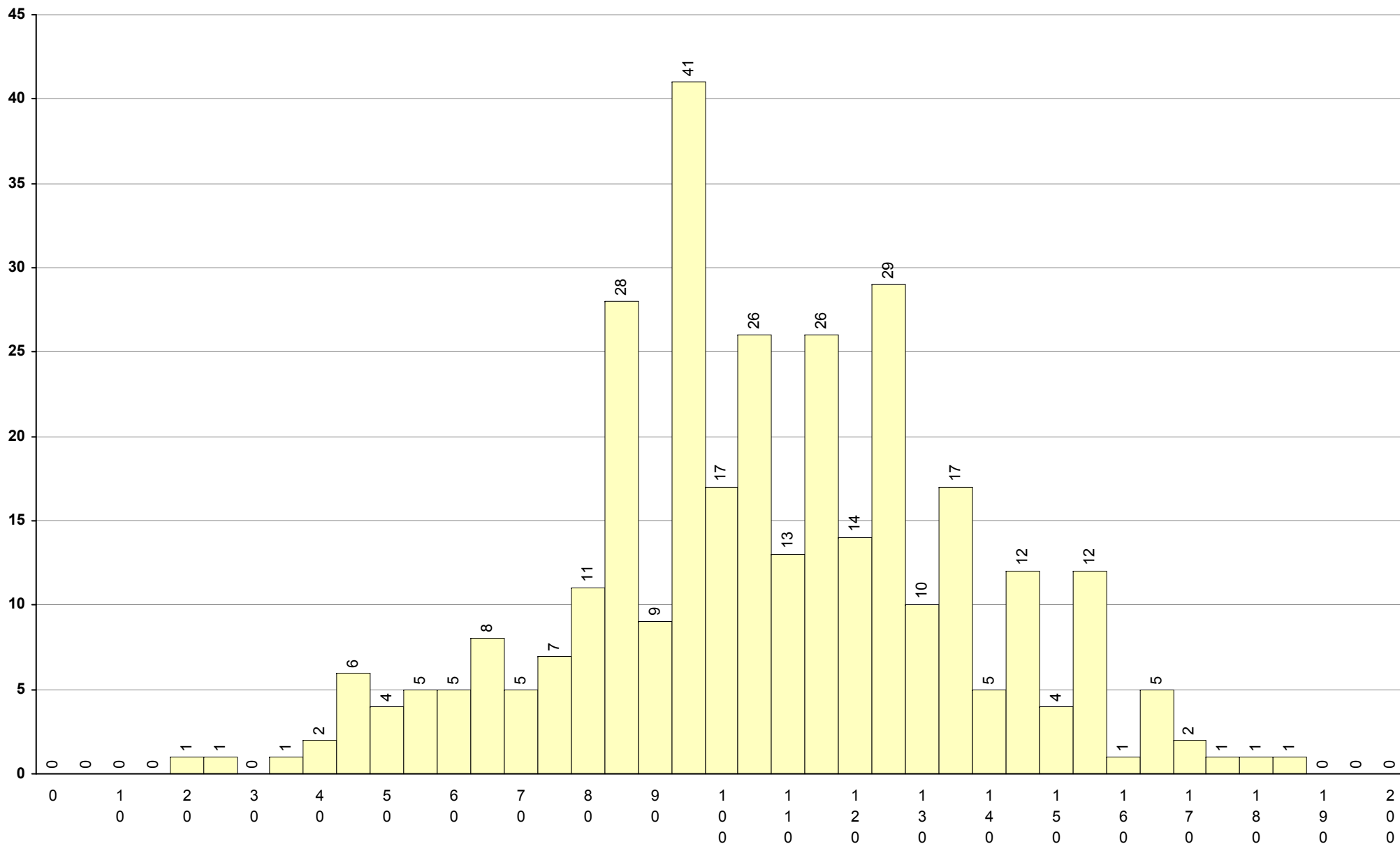
550 Inglês 2ª Fase Provas: 694 Negativas: 220 Média: 110 Desvio: 40



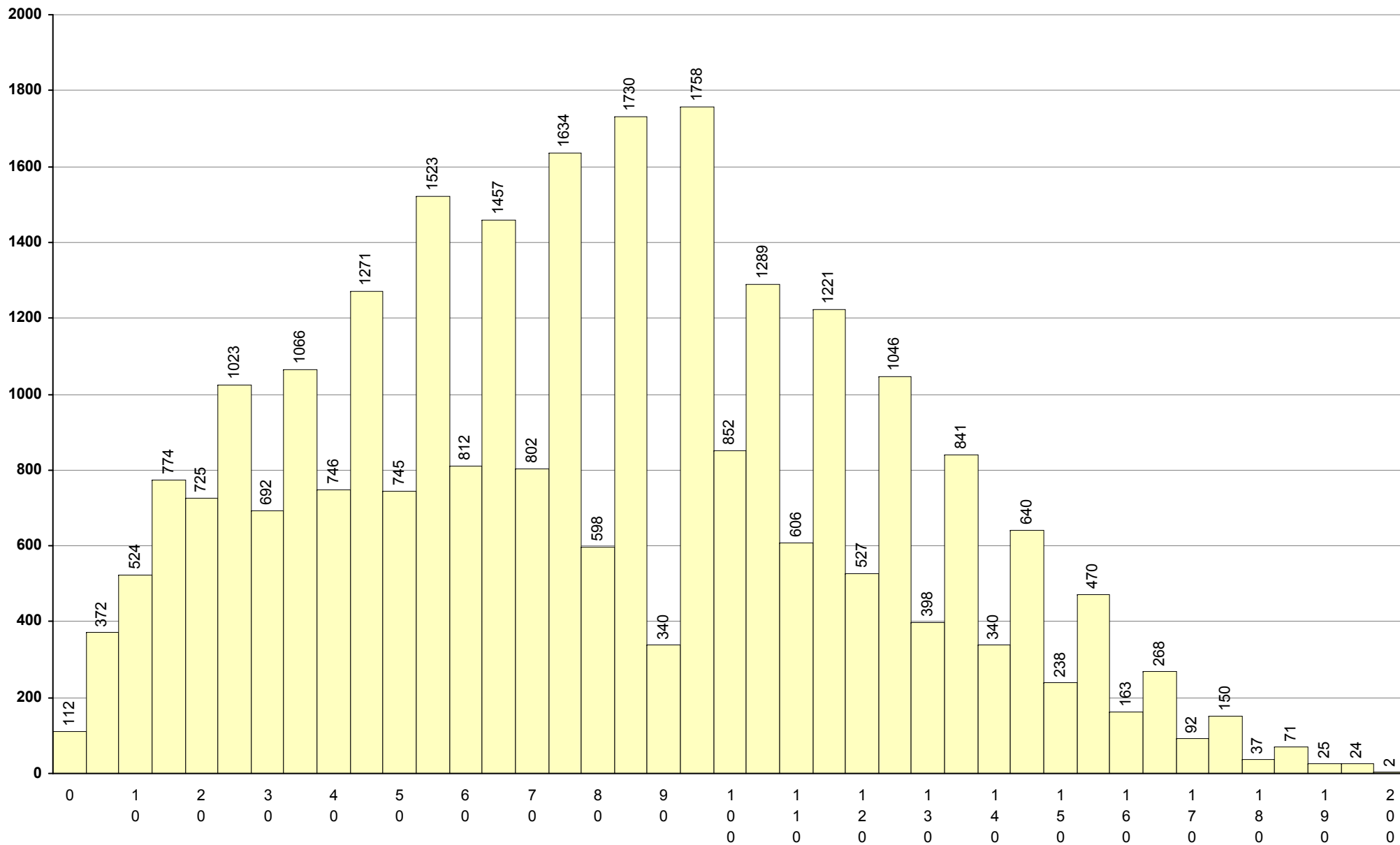
732 Latim A 2ª Fase Provas: 27 Negativas: 16 Média: 91 Desvio: 40



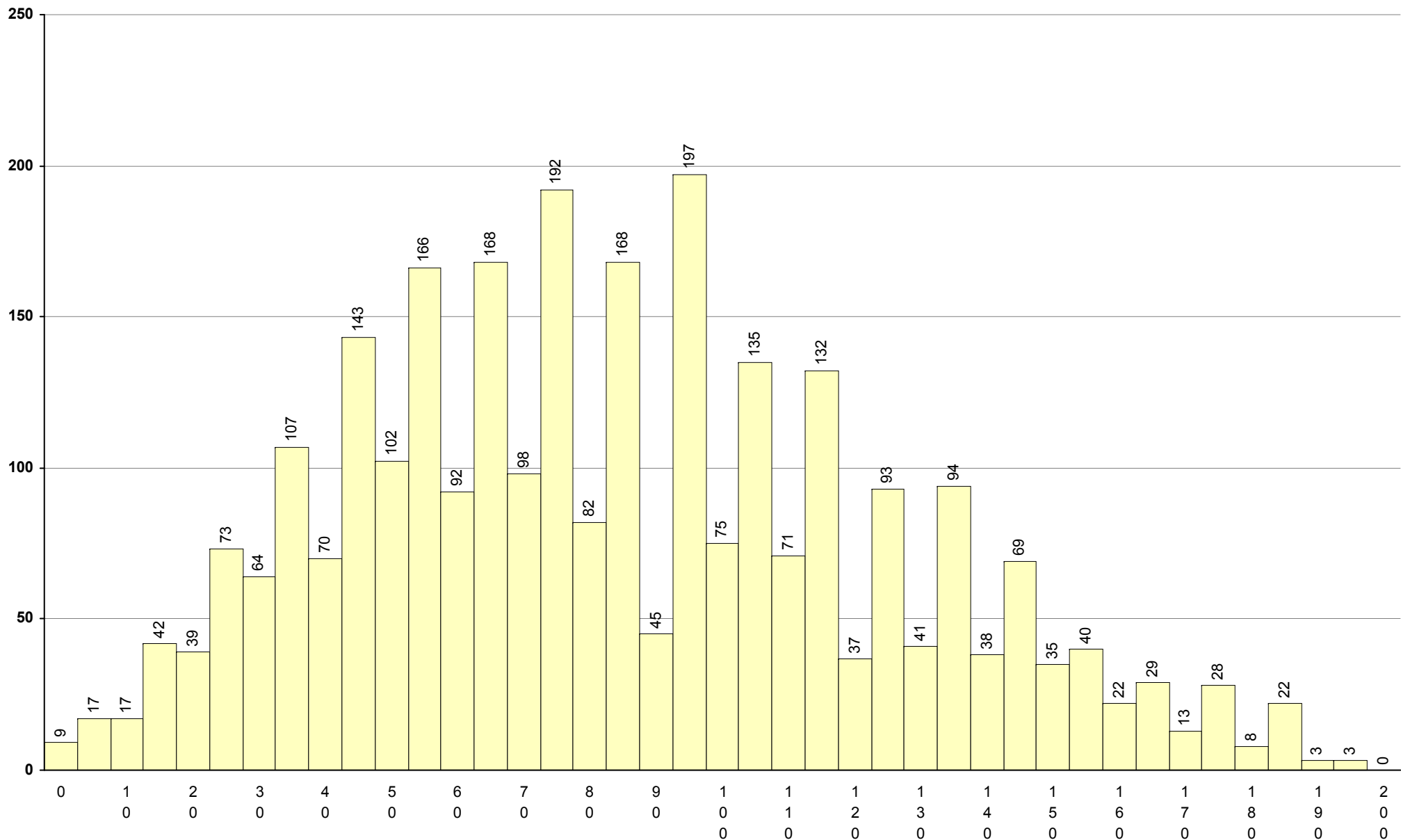
734 Literatura Portuguesa	2ª Fase	Provas: 330	Negativas: 93	Média: 108	Desvio: 29
----------------------------------	----------------	-------------	---------------	-------------------	------------



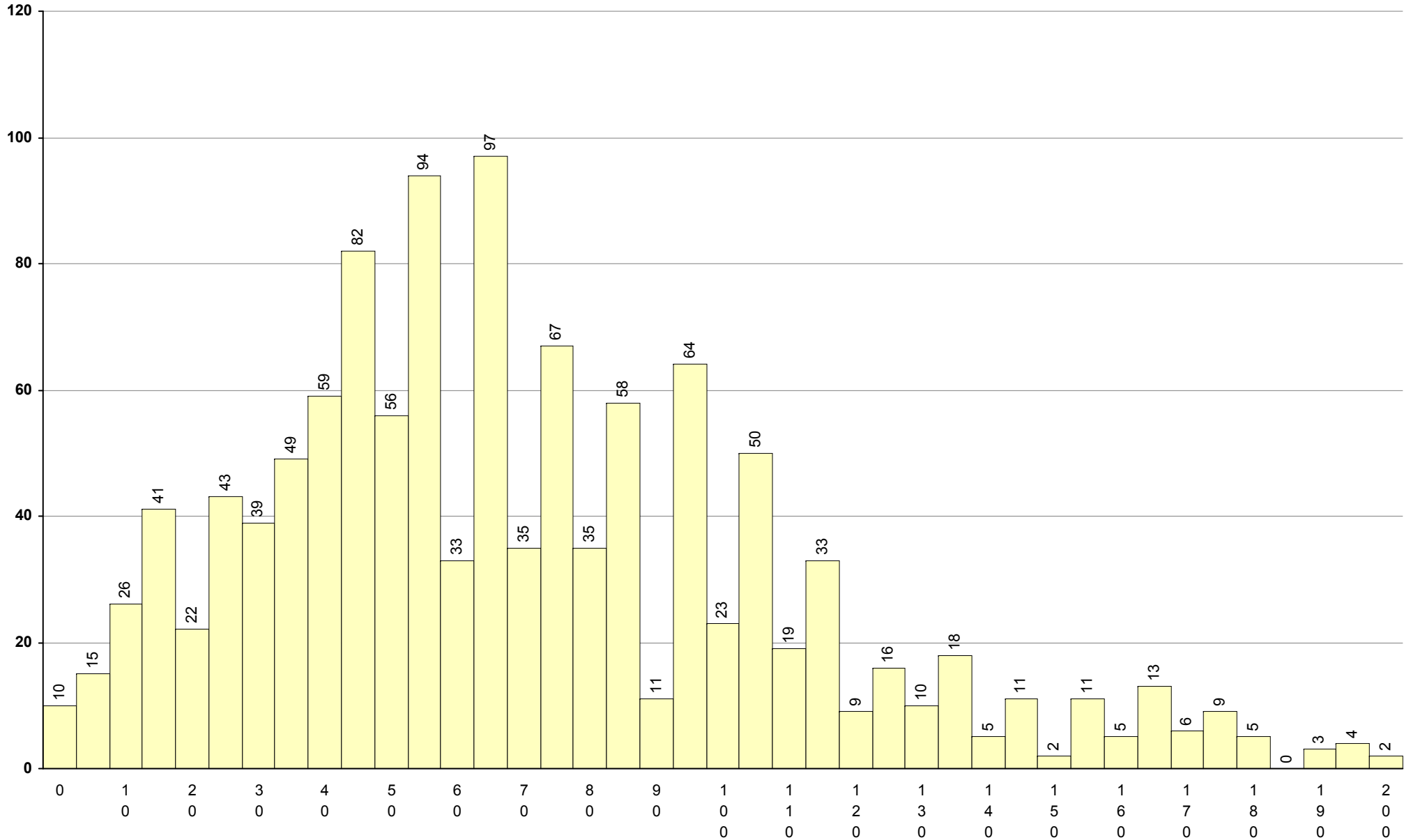
635 Matemática A 2ª Fase Provas: 28004 Negativas: 16946 Média: 81 Desvio: 41



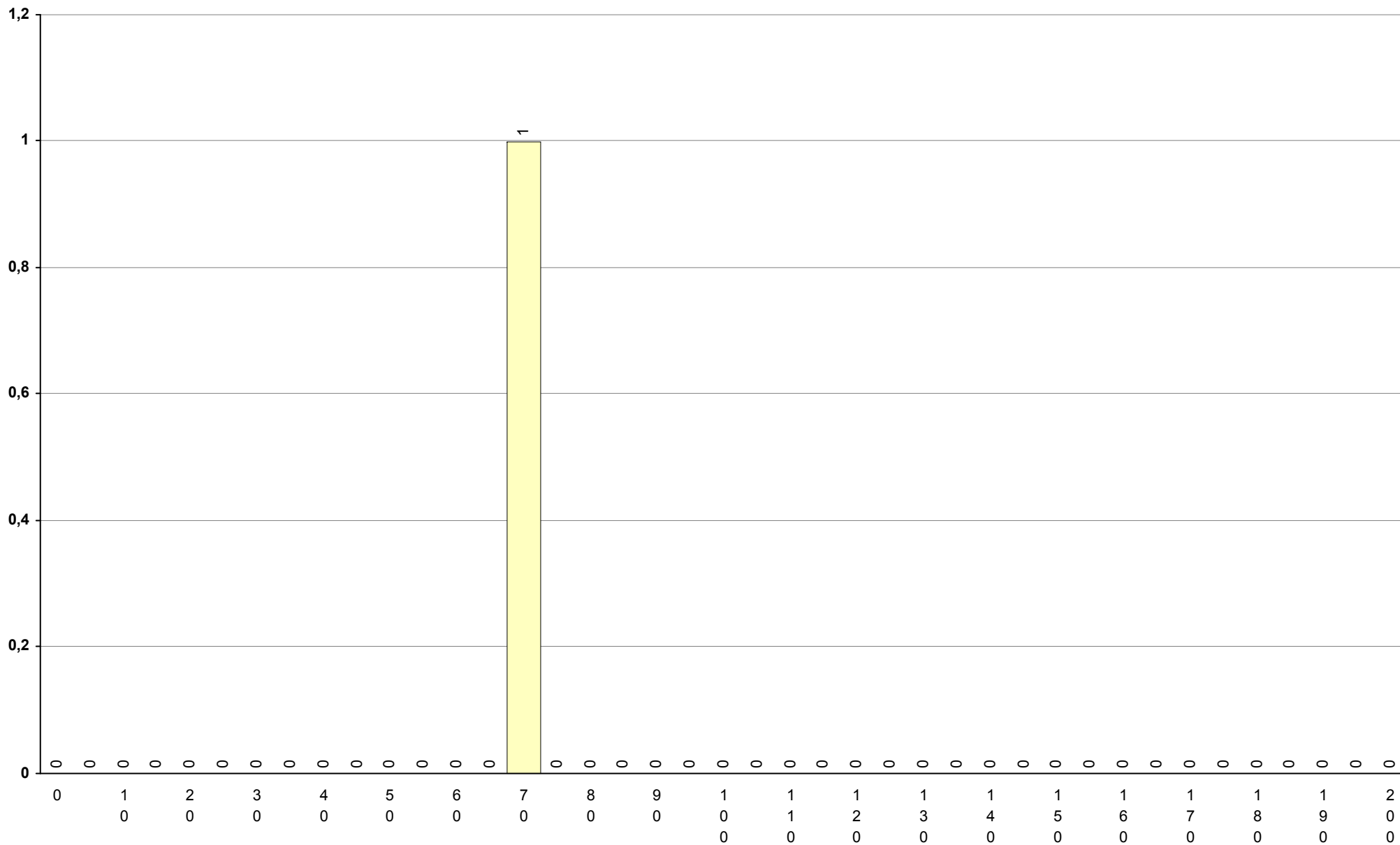
835 Matemática Aplicada às Ciências Sociais 2ª Fase Provas: 2879 Negativas: 1694 Média: 85 Desvio: 40



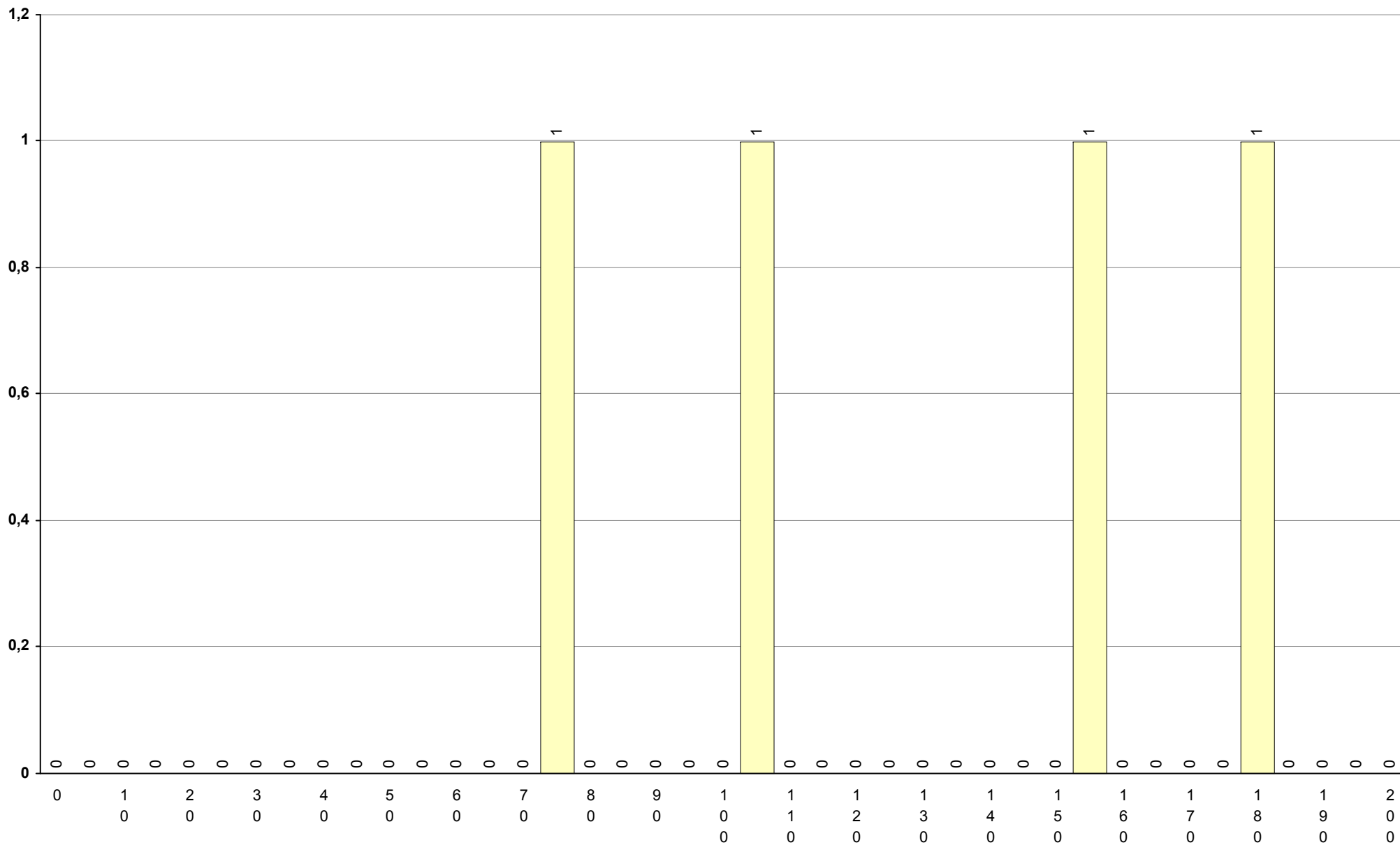
735 Matemática B **2ª Fase** Provas: 1190 Negativas: 872 Média: 71 Desvio: 40



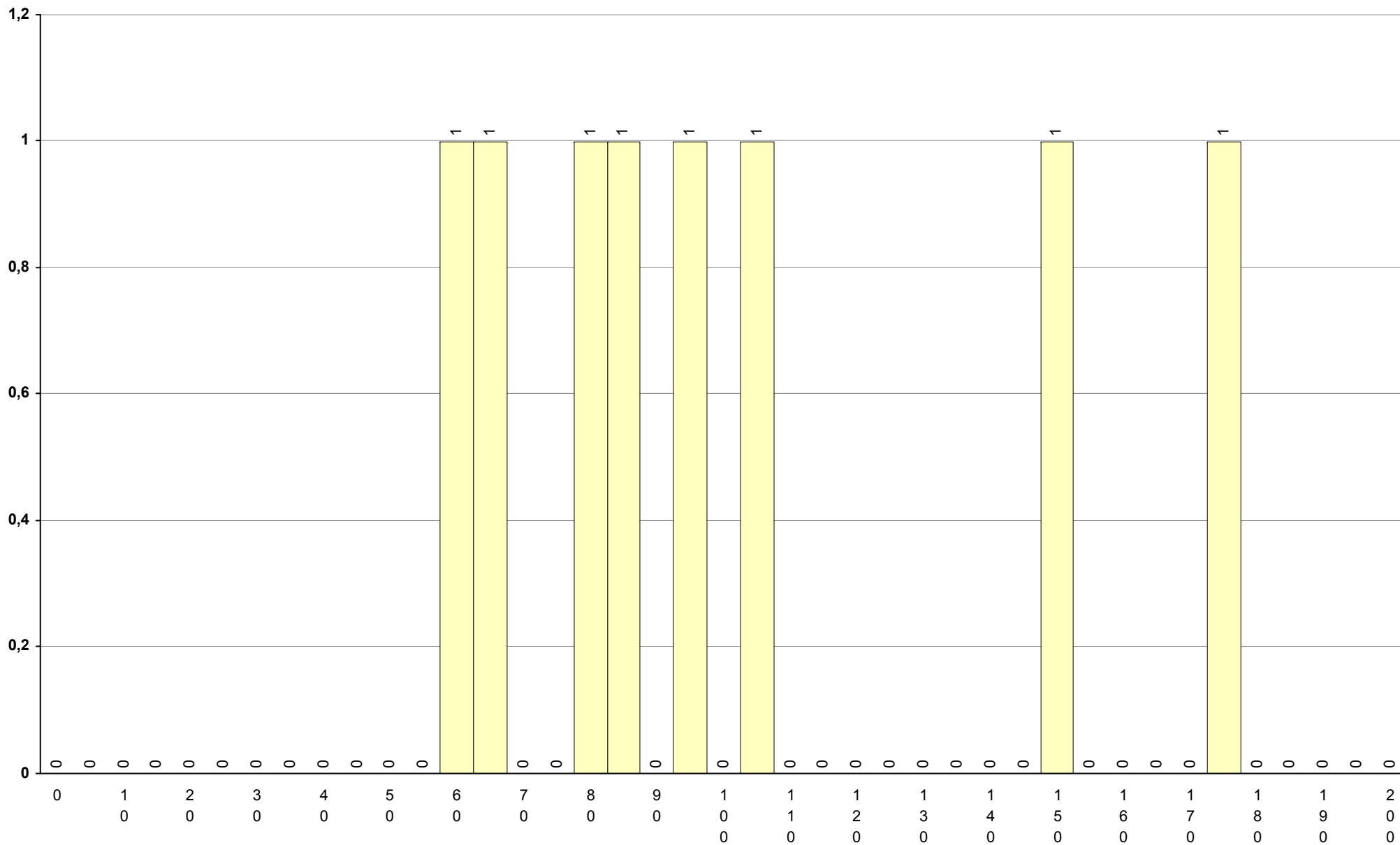
739	PLNM iniciação	2ª Fase	Provas: 1	Negativas: 1	Média: 70	Desvio: 0
------------	-----------------------	----------------	-----------	--------------	------------------	-----------



839	PLNM intermédio	2ª Fase	Provas: 4	Negativas: 1	Média: 130	Desvio: 41
------------	------------------------	----------------	-----------	--------------	-------------------	------------



239 Português	2ª Fase	Provas: 8	Negativas: 4	Média: 104	Desvio: 38
----------------------	----------------	-----------	--------------	-------------------	------------



639 Português **2ª Fase** Provas: 16912 Negativas: 9246 Média: **89** Desvio: 31

